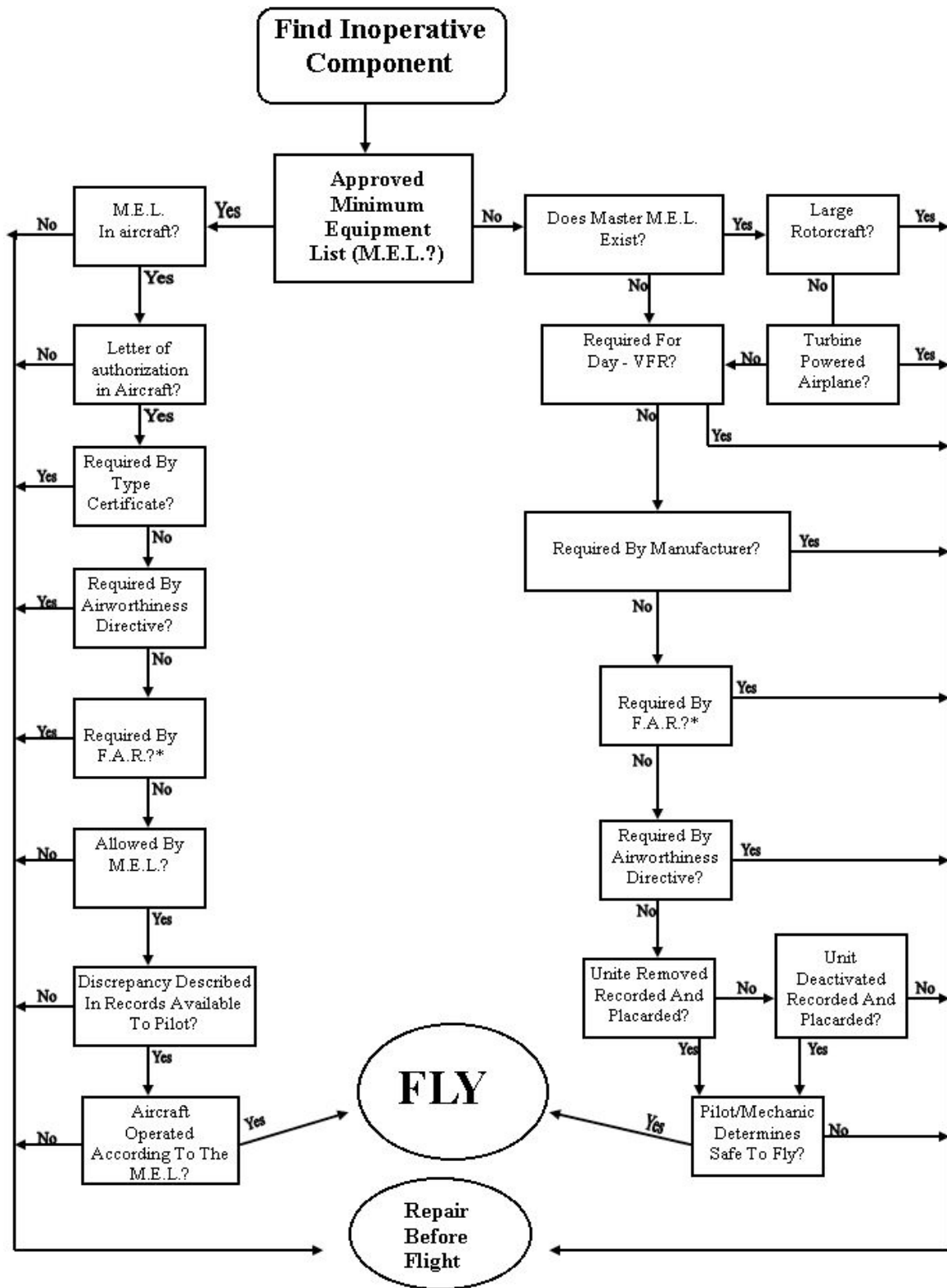


# Parks College of Engineering, Aviation, and Technology

## FAR 91.213 (Inoperative Instruments and Equipment) & Minimum Equipment Lists (MEL)

FAR 91.213 Outlines the requirements for flying an aircraft with any inoperative instruments or equipment, and the use of Minimum Equipment Lists (M.E.L.'s.) The Parks College policy, outlined in the current Flight Operations Manual, should be followed if a maintenance discrepancy is found. This flow sheet may be used to understand the flow of FAR 91.213 but does NOT replace a full understanding of the FARs.



\* FAR 91.9, .139, .131, .171, .203, .205, .207, .209, .211, .215, .307, .409, .411, .413, .417 and other FAR's as appropriate